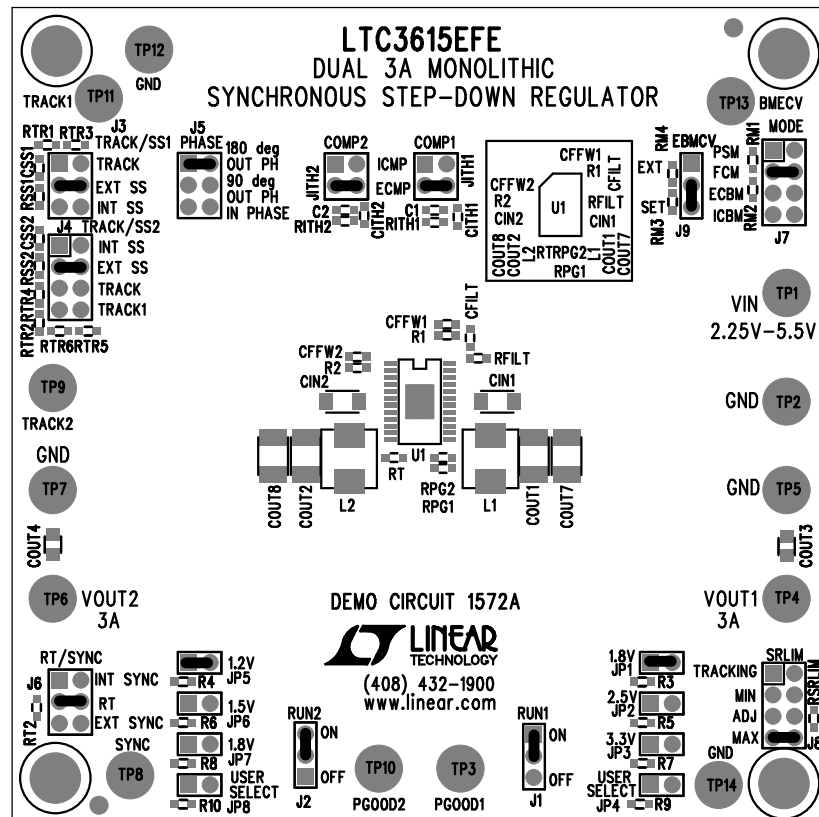


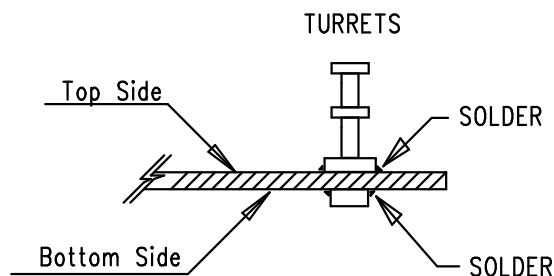
REVISION HISTORY				
ECO	REV	DESCRIPTION	APP. ENG.	DATE
-	2	PRODUCTION	TOM G.	04-07-10



Silkscreen Top

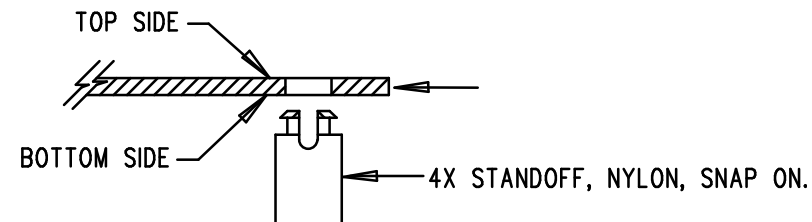
LINEAR TECHNOLOGY
DC1572A-LTC3615EFE
DUAL 3A MONOLITHIC
SYNCHRONOUS STEP-DOWN REGULATOR
DATE: 04-07-10

INSTALL TURRETS



NOTES: UNLESS OTHERWISE SPECIFIED

1. WORKMANSHIP SHALL BE IN ACCORDANCE WITH IPC-A-610.
2. ASSEMBLY PROCESS SHALL INCLUDE: REFLOW SOLDER TOP SIDE SMD.
3. PARTS TO OMIT WILL BE SPECIFIED ON THE BILL OF MATERIALS. LOCATIONS OF OMITTED PARTS SHALL BE FREE OF SOLDER. MASK THE SOLDER STENCIL WHERE SMT PARTS ARE OMITTED.
4. INSTALL SHUNTS AS SHOWN ON ASSY DRAWING.
J1 - ON, J2 - ON J7 - FSM, J8 - MAX,
J3 - EXT SS, J4 - EXT SS, JITH1 - ECMP, JITH2 - ECMP,
J5 - 180 deg OUT PH, J6 - RT EBMC - ON, JP1 - 1.8V, JP5 - 1.2V.
5. DEPANELIZE BOARDS AFTER ASSEMBLY AND ROUTE-OUT THE BREAKOUT TABS ON FOUR SIDES OF THE BOARD EDGE.
6. DO NOT APPLY ANY KIND OF ASSEMBLY STAMP OR QA STAMP TO ANY BOARD.
7. INSTALL 4 STANDOFFS AT 4 LOCATIONS AS SHOWN BELOW:



APPROVALS

PCB DES.	A.K.
APP ENG.	TOM G.

LINEAR TECHNOLOGY
1630 MCCARTHY BLVD
MILPITAS, CA 95035
PH: (408)432-1900
www.linear.com
LTC CONFIDENTIAL-
FOR CUSTOMER USE ONLY

TITLE: TOP ASSEMBLY DRAWING
DUAL 3A MONOLITHIC
SYNCHRONOUS STEP-DOWN REGULATOR

SIZE N/A	IC NO. LTC3615EFE DEMO CIRCUIT 1572A	REV. 2
-------------	--	-----------

SCALE = NONE

FILENAME: DC1572A-1.PCB

SHT 1 OF 1